

Knox Pymble Swim Club

Scholarship 2024-2025



Chris Fydler Scholarship



Chris Fydler, OAM who competed for Australia in three consecutive Summer Olympics, starting in 1992. Chris represented Australia at an international level from 1989 to 2000.

During his career Chris amassed an Olympic Games Gold Medal and World Record in the Sydney 2000 Olympics – 4 x 100m freestyle relay, nine Commonwealth Games medals, three World Championship medals and over 20 National Championships including five consecutive national 100-metre freestyle championships.

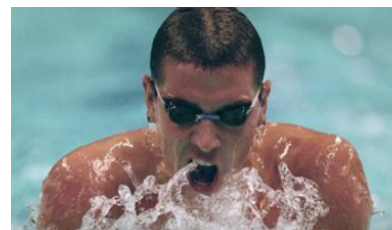
Ellie Cole Scholarship



Ellie Cole is Australia's most decorated female Paralympic athlete, with a record-breaking 17 Paralympic medals and OAM to her name.

At age three, Ellie's right leg was amputated after she suffered a life-threatening sarcoma cancer. In her 16yrs in the pool, including 4 years training with KPSC, Ellie has risen to prolific heights and, in recognition was honoured as the flagbearer at the Tokyo 2020 Closing Ceremony.

Matthew Dunn Scholarship



Matthew Dunn swimming achievements include having represented Australia in every major swimming event from 1991 to 2000 including three Olympic Games and two FINA World Championships.

Results include four World Records, eight World Short Course Gold, six Pan Pac Gold, six Commonwealth Gold and 33 National Titles.

Knox Pymble Scholarships, consist of up to and not exceeding \$2500 grant from KPSC, is awarded to a deserving swimmer representing KPSC at a state, national or international competition.

Knox Pymble Swim Club Junior Swimmer Scholarships

The Knox Pymble Swim Club Junior Scholarships, consisting of Two **reimbursements** up to and not exceeding \$500 grant from KPSC, is awarded to a deserving swimmer representing KPSC at a state or national competition.

KPSC eligible swimmers - Girls 13-17 years and Boys 14-18 years.

**Applications Close 20th of
June, 2024**

Visit [Knox Pymble Swim Club \(swimmingclub.org.au\)](http://swimmingclub.org.au) For all the information